



Sense
Measure
Control

Distributed by:



www.duncanco.com
612-331-1776

Wiring/Electronics

Acceleration

Logging

Force

Displays

Pressure

Temperature

Torque

Calibration

Position/Speed



203-792-8686

www.pmc1.com

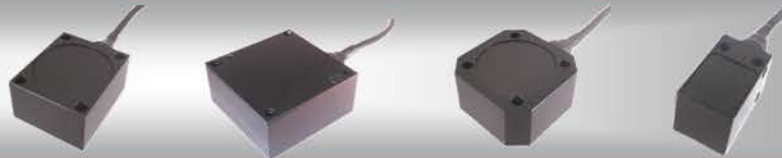
Pressure



Force



Acceleration



Temperature



Position/Speed



Torque



Wiring/Electronics



Control Solutions For Test And Measurement

Range: 1.5 psi to 29000 psi, high accuracy, temperature up to 300°F, options for all liquids and gas measurements, thread or flange mounting, cable or connector electrical connection, 5V or 8-16V Supply

♦ Fuel ♦ Oil ♦ Water ♦ Brakes ♦ Coolant ♦ Pitot ♦ Aero ♦ Engine ♦ Gearbox ♦ Dyno

Range: 20lbf to 6000lbf, high accuracy, temperature up to 275°F, Tension/Compression/Bending, 5V or 8-16V Supply, mV or amplified output signal.

♦ Gearshift ♦ Pushrods ♦ Steering ♦ Valves ♦ Bump Stop ♦ Crash Test ♦ Weight ♦ Pedal ♦ Aero

Range: 1G to 500G, Frequency response DC to 5kHz, 1/2/3 axes, Miniature robust construction, 5V or 8-16V Supply, Amplified output signal, Cable or connector electrical connection

♦ Track Mapping ♦ Hub ♦ Crash ♦ Grounding ♦ Vibration ♦ Lean ♦ Launch ♦ Traction Control

Contact or Non-contact measurements, Range: -20°F to 2000°F, Stainless steel/Aluminum/Brass construction, NTC thermistor/PT1000/Thermocouple/Infra-Red, Custom designs

♦ Oil ♦ Water ♦ Coolant ♦ Fuel ♦ Air ♦ Brakes ♦ Tires ♦ Clutch ♦ Track ♦ Exhaust ♦ Engine ♦ Gearbox

Range: 0.04" to 40", Contact or Non-contact designs, Robust construction, Temperature up to 350°F.
Linear or Rotary

♦ Turbo Speed ♦ Ride Height ♦ Suspension ♦ Pedal ♦ Crank ♦ Piston ♦ Tires ♦ Throttle ♦ Wheel ♦ Brake Disc ♦ Clutch

Range: 7lbft to 700lbft, Static or dynamic, Wireless or wired connection, Custom designs

♦ Drive Shaft ♦ Steering ♦ Suspension ♦ Crash ♦ Dyno ♦ Wheel

Designs using standard motorsport components/Cable/Heatshrink/ Connectors/Switches

♦ Sensors ♦ Full Vehicle ♦ Breakout Boxes ♦ Components ♦ Amplifier ♦ Logger ♦ Displays ♦ Test Box ♦ Control
♦ Alarm Signal ♦ Conditioner



Sense
Measure
Control

Sensing, Measurement and Control Solutions for Test and Measurement

KA Sensors , specialize in the design and manufacture of high performance sensors and instrumentation systems used in the demanding world of motorsport and automotive development.

We have more than 30 years of application experience in a hugely diverse range of industries. We understand the requirements of your applications and will assist in selecting the best and most effective solution for your needs.

We offer a large range of high quality products available *off the shelf*. Also to complement our standard product range we offer a *custom design service* where we can work with you to supply a single component or complete system designed to match your exact requirements.

The quality control system at KA Sensors ensures that every product is designed and manufactured to strict documented procedures. We test and calibrate all items prior to shipment from our factory using fully traceable test equipment. For products that may be damaged during use we offer a repair or replacement service and also a return to base re-calibration service.

We have *technical distributors* situated in the key motorsport countries around the world, who not only supply the full range of products from KA Sensors but also offer complimentary products and services.

Our customers include race teams and component manufacturers in:

*F1 – F2 – F3 – GP2– GP3 – DTM – WSR – Formula Renault – INDY – WRC – WTCC – BTCC
GT – LeMans – ALMS – WEC – NASCAR – MotoGP – Superbike – Supersport – Drag Racing
– Supercars – Dakar – Landspeed – Powerboats – Americas Cup – and more...*



PMC Engineering LLC - 11 Old Sugar Hollow Road – Danbury – CT 06810 - USA

Tel: 203-792-8686

Email: sales@pmc1.com

Fax: 203-743-2051

Web: www.pmc1.com