



TECHNICAL BULLETIN

1100 - TB
03-17



Model 1100 available with 1088

CONSTRUCTION

Housing: Available in 316 Stainless Steel and 304 Stainless Steel.
Flange base is Sanitary "Tri-Clamp"®, NPT, or 150# RF flange; can be supplied with all gaskets and clamps necessary for installation.

Stainless steel weather screen prevents debris from entering the tank.

Available Sizes: 2", 3", 4", and 6"

Seal Material: FKM (Viton), Buna;
Materials are FDA Certified USP Class VI.

APPLICATION

Used in pharmaceutical industry in production of many health care products for both human and animal consumption. Widely applied for processed food production — candy, beverages, nutritional supplements and artificial sweeteners. May also be used in cosmetics production and specialty chemicals.



MODEL 1100 SANITARY VENT

The Model 1100 is a stainless steel sanitary vent designed to operate at multiple set points as a breather valve to avoid vacuum or over pressurization inside a tank or piping system. This unit comes with a true sanitary blanketing connection, and is designed so that it can be used with our sanitary blanketing valve; VCI model 1088.

FEATURES

**Easy Inspection,
Installation and
Maintenance:**

Ingenious design and industrial construction permits easy, convenient handling for inspection, installation and maintenance. No adjustment is required during reassembly after cleaning or maintenance to establish set point. Main vent complies with sanitary standards for self-draining and machine finish requirements.

**Maintains Accurate
Settings:**

Controlled design for an accurate, repeatable set point. Minimum setting down to 0.43 psi for pressure and 0.04 psi for vacuum. Maximum setting upwards to 3.42 psi for pressure and 0.381 psi for vacuum, See Table 1 and Table 2.

Shutoff:

An extremely tight shut off with a leakage rate better than the industry standard of less than 1 SCFH at 90% of set point is verified for both pressure and vacuum which prevents waste of blanketing gases. All vents are 100% tested to meet Cashco's seat leakage requirements.

SPECIFICATIONS

Body

Connections: Sanitary "Tri-Clamp"®, NPT, 150#
RF flange

Body Size and Material:

2", 3", 4", and 6" (DN50, DN80, DN100, and DN150) sizes. 316 and 304 stainless steel.

Range Springs:

Table 1 Pressure Range:		
Size	Min Setpoint (psi)	Max Setpoint (psi)
2"	0.49	3.42
3"	0.44	3.31
4"	0.43	2.67
6"	0.44	2.19

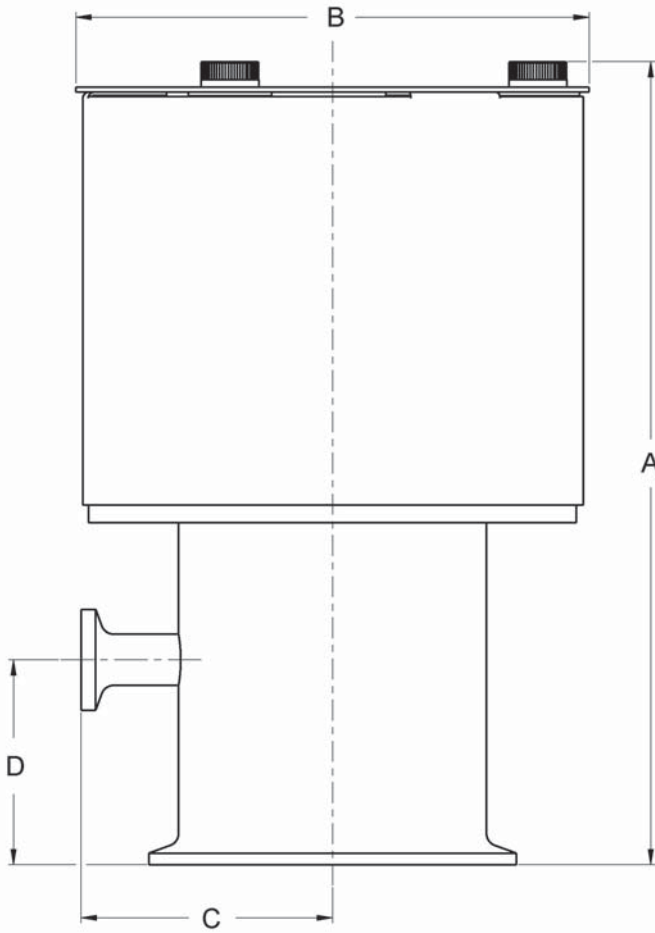
Table 2 Vacuum Range:		
Size	Min Setpoint (psi)	Max Setpoint (psi)
2"	0.081	0.385
3"	0.068	0.358
4"	0.069	0.319
6"	0.087	0.397

OPTIONS

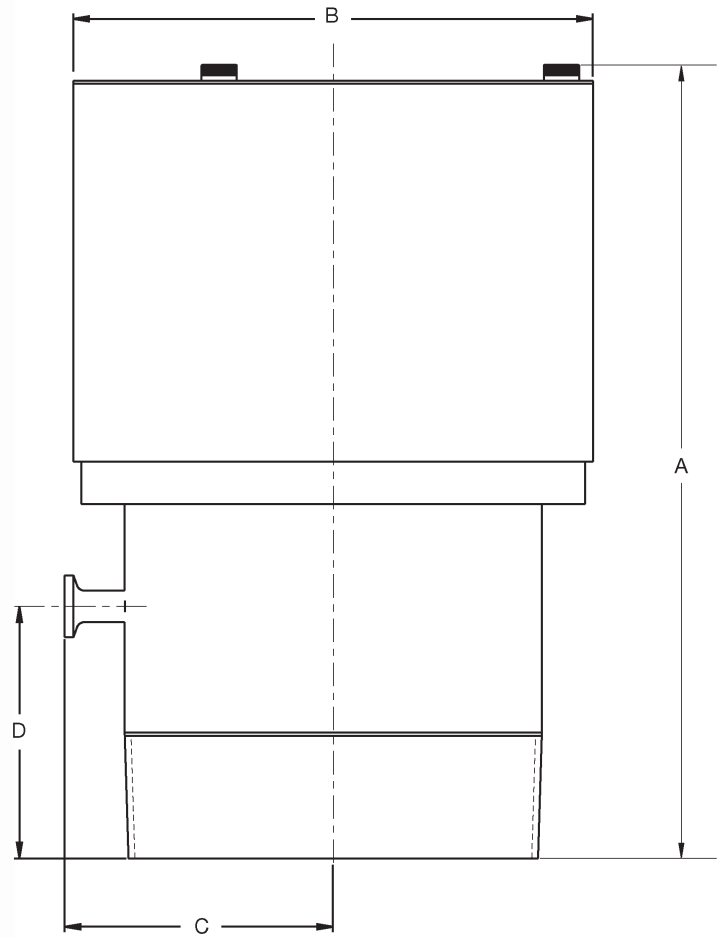
Cleaned for Oxygen Service #S-1134 - (M) in Position 12. - This is a requirement for gaseous oxygen environments. All regulators requiring advanced cleaning shall be processed according to strict guidelines.

Sanitary Construction - (K) in Position 12. - SST Construction - Interior of body surface Electro Polished to 16 micro-inch Ra finish. Unit is cleaned to Cashco Spec. #S-1576. Comply with FDA 21 CFR 177 2600 & USP Class VI material classification.

DIMENSIONS & WEIGHTS



**Sanitary "Tri-Clamp"®
Connection**



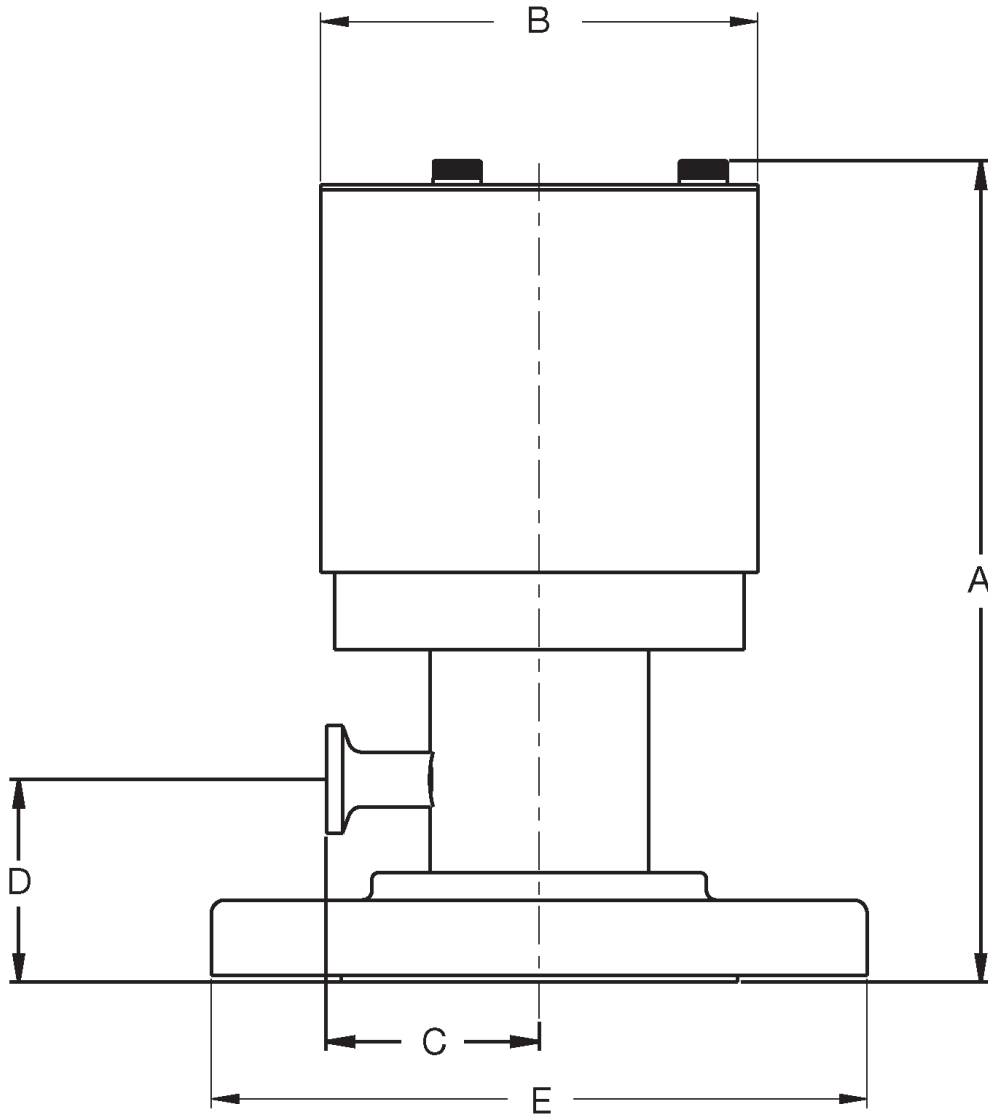
NPT Connection

SIZE	DIMENSIONS - inches (mm)				Weights - lbs. (kg)
	A	B	C	D	
2"	6.81 (173.0)	4.00 (101.6)	1.94 (49.3)	1.50 (38.1)	3.37 (1.53)
3"	7.60 (193.0)	5.00 (127.0)	2.45 (62.2)	2.00 (50.8)	5.21 (2.36)
4"	8.09 (205.5)	6.00 (152.4)	2.95 (74.9)	2.00 (50.8)	7.93 (3.60)
6"	9.60 (243.8)	8.25 (209.6)	3.96 (100.6)	3.00 (76.2)	15.56 (7.06)

SIZE	DIMENSIONS - inches (mm)				Weights - lbs. (kg)
	A	B	C	D	
2"	10.06 (255.62)	4.00 (101.6)	2.12 (53.85)	4.00 (101.60)	5.13 (2.32)
3"	9.84 (250.06)	5.00 (127.0)	2.70 (68.58)	4.00 (101.60)	8.26 (3.74)
4"	10.35 (262.89)	6.00 (152.4)	3.19 (81.15)	4.00 (101.60)	11.33 (5.14)
6"	12.56 (319.91)	8.25 (209.6)	4.26 (108.20)	4.00 (101.60)	22.38 (10.15)

The contents of this publication are presented for informational purposes only, and while every effort has been made to ensure their accuracy, they are not to be construed as warranties or guarantees, express or implied, regarding the products or services described herein or their use or applicability. We reserve the right to modify or improve the designs or specifications of such product at any time without notice. Cashco, Inc. does not assume responsibility for the selection, use or maintenance of any product. Responsibility for proper selection, use and maintenance of any Cashco, Inc. product remains solely with the purchaser.

DIMENSIONS & WEIGHTS



150 # RF Flange

DIMENSIONS - inches (mm)						Weights - lbs. (kg)
SIZE	A	B	C	D	E	
2"	7.51 (190.75)	4.00 (101.60)	1.95 (49.53)	2.00 (50.80)	6.00 (152.40)	9.09 (4.12)
3"	8.47 (215.18)	5.00 (127.00)	2.45 (62.23)	3.20 (81.28)	7.50 (190.50)	14.22 (6.45)
4"	8.96 (227.64)	6.00 (152.40)	2.95 (74.95)	3.20 (81.28)	9.00 (228.60)	19.40 (8.80)
6"	11.99 (304.59)	8.25 (209.55)	3.95 (100.45)	3.07 (78.08)	11.00 (279.40)	32.29 (14.64)

1100 PRODUCT CODE 03/17/17

Last 6 Characters reserved for SPQ drawing numbers assigned by Cashco Inc.
(Format as - # # # # # #)



POSITION 3 - END CONNECTIONS	
DESCRIPTION	CODE
NPT	1
"Tri-Clamp®"	T
150# RF Flanges	6

POSITION 4 - SIZE	
INCH ASME	CODE
2" - DN50	2
3" - DN80	3
4" - DN100	4
6" - DN150	6

POSITION 5 - BODY/ TRIM/ PALLET MATERIAL		
MATERIAL	With 1/2" Blanket Connection	Without 1/2" Blanket Connection
	CODE	
304 SST	A	C
316 SST	B	D

POSITION 7 - BLANKETING	
DESCRIPTION	CODE
With 1088	1
Without 1088	0

POSITION 8 - SEALS	
MATERIAL	CODE
Viton/ FKM	1
Buna	2
FDA Certified USP Class VI	

POSITION 9 - PRESSURE RANGE	
RANGE	CODE
< 0.9 Psi	A
≥ 0.9 Psi	B
Refer to Table 1 on page 2.	

POSITION 10 - VACUUM RANGE	
RANGE	CODE
< 0.1 Psi	A
≥ 0.1 Psi	B
Refer to Table 2 on page 2.	

POSITION 11 - OPTIONS	
DESCRIPTION	CODE
None	0
Supplied with Clamps and Gaskets * **	1
* Gasket Material Determined By Seal Material (Position 8) ** Not available with flanged end connections.	

POSITION 12 - CLEANING	
OPTIONS	CODE
Oxygen Cleaned per Spec. #S-1134	M
Sanitary Construction - Clean Per Spec. #S-1576	K