

# Ductile Iron Threaded Fittings



Distributed by:

**DUNCAN CO**


[www.duncanco.com](http://www.duncanco.com)

612-331-1776



# Ductile Iron Threaded Fittings

## Specifications

-  branded fittings are UL Listed and FM Approved at **500 psi**
- Rated to 300 psi WSP
- Ductile iron castings conform to ASTM A536
- Fitting dimensions conform to ASME B16.3
- Bushings and plugs conform to ASME B16.14
- All fittings are 100% air tested
- NPT threads on all fittings conform to ASME B1.20.1
- Independent lab verification that fittings meet applicable chemical & mechanical properties
- Manufacturing facilities are ISO 9001:2008 and ISO 14001
- ProPak™ Packaging

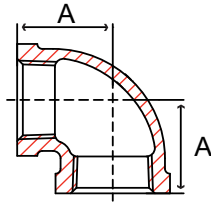


Temperature Degrees F	Working Pressure, Non-Shock psig Class 300 Threaded Fittings
-20 to 100	500
150	500
200	480
250	460
300	440
350	420
400	400
450	380
500	360
550	340
600	320
650	300



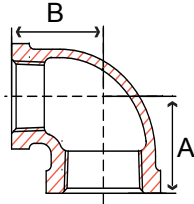
**SCI ProPak™ System**

DUCTILE



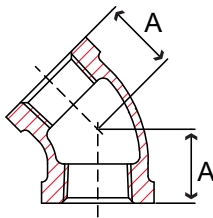
**Fig. 35E 3 – 90° Elbow**

Size in	Part Number	A in	Packing		Weight lb
			Inner	Master	
1/2	35E 3004	1.13	100	200	0.2
3/4	35E 3006	1.31	70	140	0.3
1	35E 3010	1.50	40	80	0.5
1-1/4	35E 3012	1.75	25	50	0.8
1-1/2	35E 3014	1.94	18	36	1.1
2	35E 3020	2.25	10	20	1.8
2-1/2	35E 3024	2.70	4	8	3.2



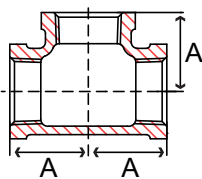
**Fig. 35RE3 – 90° Reducing Elbow**

Size in	Part Number	A in	B in	Packing		Weight lb
				Inner	Master	
3/4 x 1/2	35RE3006004	1.20	1.22	80	160	0.3
1 x 1/2	35RE3010004	1.26	1.36	70	140	0.4
1 x 3/4	35RE3010006	1.38	1.45	50	100	0.4
1-1/4 x 1/2	35RE3012004	1.34	1.53	35	70	0.5
1-1/4 x 3/4	35RE3012006	1.45	1.63	35	70	0.6
1-1/4 x 1	35RE3012010	1.58	1.67	30	60	0.7
1-1/2 x 1/2	35RE3014004	1.52	1.75	30	60	0.6
1-1/2 x 3/4	35RE3014006	1.52	1.75	25	50	0.7
1-1/2 x 1	35RE3014010	1.65	1.80	20	40	0.8
1-1/2 x 1-1/4	35RE3014012	1.82	1.88	18	36	1.0
2 x 1/2	35RE3020004	1.60	1.97	18	36	1.0
2 x 3/4	35RE3020006	1.60	1.97	18	36	1.0
2 x 1	35RE3020010	1.73	2.02	16	32	1.2
2 x 1-1/4	35RE3020012	1.90	2.10	12	24	1.3
2 x 1-1/2	35RE3020014	2.02	2.16	10	20	1.5
2-1/2 x 1-1/2	35RE3024014	2.16	2.51	6	12	2.2
2-1/2 x 2	35RE3024020	2.39	2.60	6	12	2.5



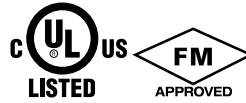
**Fig. 35F 3 – 45° Elbow**

Size in	Part Number	A in	Packing		Weight lb
			Inner	Master	
1/2	35F 3004	0.88	150	300	0.2
3/4	35F 3006	0.98	80	160	0.3
1	35F 3010	1.13	40	80	0.5
1-1/4	35F 3012	1.29	25	50	0.7
1-1/2	35F 3014	1.44	20	40	1.0
2	35F 3020	1.69	10	20	1.6
2-1/2	35F 3024	1.95	4	8	2.7



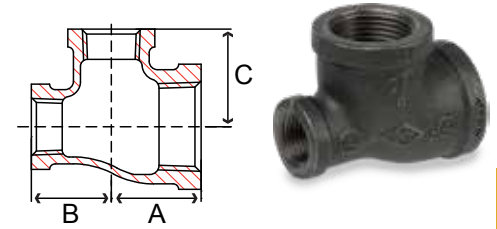
**Fig. 35T 3 – Tee**

Size in	Part Number	A in	Packing		Weight lb
			Inner	Master	
1/2	35T 3004	1.13	80	160	0.3
3/4	35T 3006	1.31	30	60	0.5
1	35T 3010	1.50	25	50	0.7
1-1/4	35T 3012	1.75	10	20	1.1
1-1/2	35T 3014	1.94	10	20	1.5
2	35T 3020	2.25	6	12	2.4
2-1/2	35T 3024	2.70	4	8	4.3



**Fig. 35RT3 – Reducing Tee**

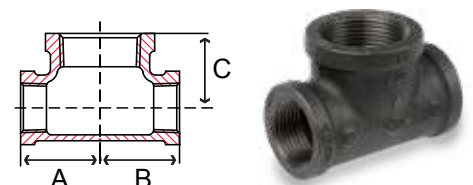
Size in	Part Number	A in	B in	C in	Packing		Weight lb
					Inner	Master	
3/4 x 1/2	35RT3006004	1.20	1.20	1.22	60	120	0.4
1 x 1/2	35RT3010004	1.26	1.26	1.36	30	60	0.6
1 x 1/2 x 1	35RT3010004010	1.50	1.36	1.50	30	60	0.6
1 x 3/4	35RT3010006	1.38	1.38	1.45	25	50	0.6
1 x 3/4 x 3/4	35RT3010006006	1.38	1.31	1.45	35	70	0.6
1 x 3/4 x 1	35RT3010006010	1.50	1.45	1.50	25	50	0.7
1-1/4 x 1/2	35RT3012004	1.34	1.34	1.53	20	40	0.8
1-1/4 x 1/2 x 1-1/4	35RT3012004012	1.75	1.53	1.75	25	50	0.9
1-1/4 x 3/4	35RT3012006	1.45	1.45	1.62	15	30	0.9
1-1/4 x 3/4 x 1-1/4	35RT3012006012	1.75	1.62	1.75	20	40	1.0
1-1/4 x 1	35RT3012010	1.58	1.58	1.67	15	30	1.0
1-1/4 x 1 x 1/2	35RT3012010004	1.34	1.26	1.53	25	50	0.7
1-1/4 x 1 x 3/4	35RT3012010006	1.45	1.38	1.63	20	40	0.8
1-1/4 x 1 x 1	35RT3012010010	1.58	1.50	1.69	20	40	0.9
1-1/4 x 1 x 1-1/4	35RT3012010012	1.75	1.69	1.75	15	30	1.0
1-1/2 x 1/2	35RT3014004	1.41	1.41	1.66	16	32	1.0
1-1/2 x 1/2 x 1-1/4	35RT3014004012	1.81	1.56	1.88	24	48	1.1
1-1/2 x 1/2 x 1-1/2	35RT3014004014	1.94	1.66	1.94	12	24	1.2
1-1/2 x 3/4	35RT3014006	1.52	1.52	1.75	16	32	1.1
1-1/2 x 3/4 x 1-1/4	35RT3014006012	1.94	1.66	1.88	20	40	1.1
1-1/2 x 3/4 x 1-1/2	35RT3014006014	1.94	1.75	1.94	18	36	1.2
1-1/2 x 1	35RT3014010	1.65	1.65	1.80	12	24	1.2
1-1/2 x 1 x 1/2	35RT3014010004	1.44	1.25	1.69	20	40	0.8
1-1/2 x 1 x 3/4	35RT3014010006	1.50	1.44	1.75	16	32	0.9
1-1/2 x 1 x 1	35RT3014010010	1.65	1.50	1.80	16	32	1.0
1-1/2 x 1 x 1-1/4	35RT3014010012	1.82	1.67	1.88	12	24	1.2
1-1/2 x 1 x 1-1/2	35RT3014010014	1.94	1.80	1.94	12	24	1.3
1-1/2 x 1-1/4	35RT3014012	1.82	1.82	1.88	12	24	1.4
1-1/2 x 1-1/4 x 1/2	35RT3014012004	1.41	1.34	1.66	16	32	0.9
1-1/2 x 1-1/4 x 3/4	35RT3014012006	1.52	1.45	1.75	16	32	1.0
1-1/2 x 1-1/4 x 1	35RT3014012010	1.65	1.58	1.80	16	32	1.1
1-1/2 x 1-1/4 x 1-1/4	35RT3014012012	1.82	1.75	1.88	14	28	1.3
1-1/2 x 1-1/4 x 1-1/2	35RT3014012014	1.94	1.88	1.94	14	28	1.4
2 x 1/2	35RT3020004	1.49	1.49	1.88	10	20	1.5
2 x 3/4	35RT3020006	1.60	1.60	1.97	10	20	1.6
2 x 1	35RT3020010	1.73	1.73	2.02	8	16	1.7
2 x 1 x 2	35RT3020010020	2.25	2.02	2.25	8	16	1.9
2 x 1-1/4	35RT3020012	1.90	1.90	2.10	8	16	1.9
2 x 1-1/4 x 2	35RT3020012020	2.25	2.10	2.25	8	16	2.0
2 x 1-1/2	35RT3020014	2.02	2.02	2.16	8	16	2.1
2 x 1-1/2 x 1/2	35RT3020014004	1.49	1.41	1.88	10	20	1.3
2 x 1-1/2 x 3/4	35RT3020014006	1.60	1.52	1.97	10	20	1.4
2 x 1-1/2 x 1	35RT3020014010	1.73	1.65	2.02	8	16	1.5
2 x 1-1/2 x 1-1/4	35RT3020014012	1.90	1.82	2.10	8	16	1.7
2 x 1-1/2 x 1-1/2	35RT3020014014	2.02	1.94	2.16	8	16	1.8

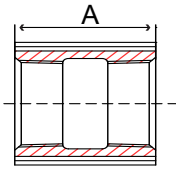


DUCTILE

**Fig. 35BT3 – Bull Head Tee**

Size in	Part Number	A in	B in	C in	Packing		Weight lb
					Inner	Master	
3/4 x 1	35BT3006010	1.45	1.45	1.37	30	60	0.6
1 x 1-1/4	35BT3010012	1.67	1.67	1.58	20	40	0.9
1 x 1-1/2	35BT3010014	1.80	1.80	1.65	15	30	1.0
1-1/4 x 1 x 1-1/2	35BT3012010014	1.88	1.80	1.82	15	30	1.2
1-1/4 x 1-1/2	35BT3012014	1.88	1.88	1.82	15	30	1.3
1-1/4 x 2	35BT3012020	2.10	2.10	1.90	10	20	1.6
1-1/2 x 1-1/4 x 2	35BT3014012020	2.16	2.10	2.02	10	20	1.8
1-1/2 x 2	35BT3014020	2.16	2.16	2.02	8	16	1.8

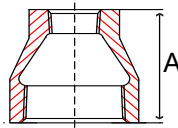




**Fig. 35CP3 – Straight Coupling with Ribs**

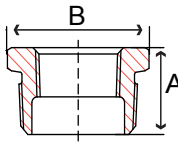
Size in	Part Number	A in	Packing		Weight lb
			Inner	Master	
1/2	35CP3004	1.38	200	400	0.1
3/4	35CP3006	1.63	100	200	0.2
1	35CP3010	1.75	60	120	0.4
1-1/4	35CP3012	2.00	35	70	0.5
1-1/2	35CP3014	2.19	25	50	0.7
2	35CP3020	2.62	15	30	1.2
2-1/2	35CP3024	3.00	9	18	2.2

DUCTILE



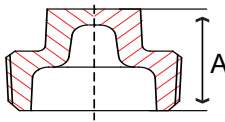
**Fig. 35RC3 – Hex Reducing Coupling**

Size in	Part Number	A in	Packing		Weight lb
			Inner	Master	
1 x 1/2	35RC3010004	1.69	80	160	0.3
1 x 3/4	35RC3010006	1.69	60	120	0.4
1-1/4 x 3/4	35RC3012006	2.06	40	80	0.6
2 x 1 (not hex)	35RC3020010	2.81	20	40	1.0



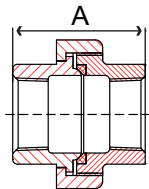
**Fig. 35HB3 – Hex Bushing**

Size in	Part Number	A in	B in	Packing		Weight lb
				Inner	Master	
1 x 1/2	35HB3010004	1.06	1.40	180	360	0.2
1 x 3/4	35HB3010006	1.06	1.40	180	360	0.1
1-1/4 x 1	35HB3012010	1.19	1.80	90	180	0.2
1-1/2 x 1	35HB3014010	1.25	1.95	75	150	0.4
1-1/2 x 1-1/4	35HB3014012	1.25	1.95	75	150	0.3
2 x 1	35HB3020010	1.38	2.55	40	80	0.6
2 x 1-1/4	35HB3020012	1.38	2.55	40	80	0.6
2 x 1-1/2	35HB3020014	1.38	2.55	40	80	0.6



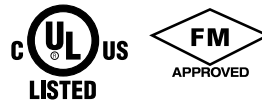
**Fig. 35SP3 – Square Head Plug**

Size in	Part Number	A in	Packing		Weight lb
			Inner	Master	
1/2	35SP3004	0.94	600	1200	0.07
3/4	35SP3006	1.12	350	700	0.1
1	35SP3010	1.25	200	400	0.1
1-1/4	35SP3012	1.37	100	200	0.3
1-1/2	35SP3014	1.44	80	160	0.4
2	35SP3020	1.50	45	90	0.6



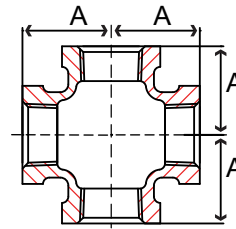
**Fig. 35U 3 – Union with Brass Seat**

Size in	Part Number	A in	Packing		Weight lb
			Inner	Master	
1	35U 3010	2.19	20	40	1.0
1-1/4	35U 3012	2.50	15	30	1.2
1-1/2	35U 3014	2.62	10	20	1.7
2	35U 3020	3.12	6	12	2.4



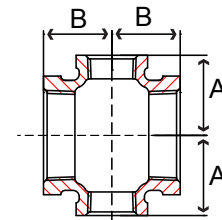
**Fig. 35X 3 – Cross**

Size in	Part Number	A in	Packing		Weight lb
			Inner	Master	
1	35X 3010	1.50	20	40	0.9
1-1/4	35X 3012	1.75	12	24	1.4
1-1/2	35X 3014	1.94	8	16	1.8
2	35X 3020	2.25	6	12	2.8



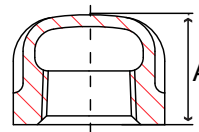
**Fig. 35RX3 – Reducing Cross**

Size in	Part Number	A in	B in	Packing		Weight lb
				Inner	Master	
1-1/4 x 1	35RX3012010	1.67	1.58	15	30	1.2
1-1/2 x 1	35RX3014010	1.80	1.65	12	24	1.4
2 x 1	35RX3020010	2.02	1.73	8	16	2.0



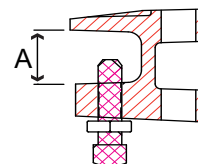
**Fig. 35C 3 – Cap**

Size in	Part Number	A in	Packing		Weight lb
			Inner	Master	
1/2	35C 3004	0.87	300	600	0.1
3/4	35C 3006	0.97	200	400	0.1
1	35C 3010	1.16	110	220	0.2
1-1/4	35C 3012	1.28	70	140	0.4
1-1/2	35C 3014	1.33	50	100	0.5
2	35C 3020	1.45	25	50	0.8
2-1/2	35C 3024	1.70	18	36	1.6



**Fig. 35BC3 – Beam Clamp**

Size in	Part Number	A in	Packing		Weight lb
			Inner	Master	
3/8	35BC3003	0.75	100	200	0.3
1/2	35BC3004	0.75	80	160	0.5



DUCTILE