

2 7/8"
(73 mm)

2 3/8"
(60 mm)

CIRCULAR SIGHTGLASSES

Series NW-BW, NW-FT, NW-RF

Series NW-BW, NW-FT, and NW-RF

This series of sightglasses is designed for attachment to stub end pipe, ANSI flanged nozzles or vessel studding outlets. Each is rated for 150 PSIG (10.3 Barg) at 300°F (149°C) with a tempered soda lime lens and 500°F (260°C) with a borosilicate lens. Sightglasses are constructed using code materials. Optional accessories include Series PL, MSL, SLEX, REX, FBX illuminators, and Type I wipers.

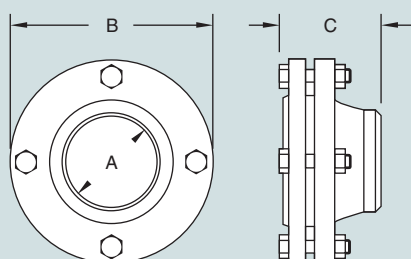
Distributed by:



www.duncanco.com

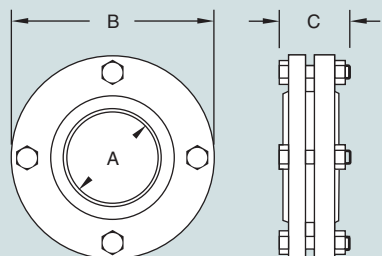
612-331-1776

Series NW-BW Buttweld Connection



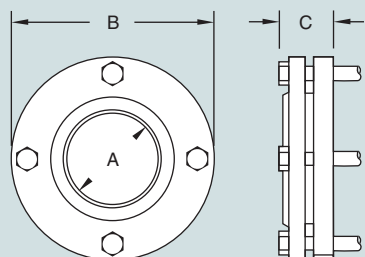
Size	A		B		C		APPROX. WEIGHT	
	Inches	MM	Inches	MM	Inches	MM	LBS	KGS
1"	1	25	4 1/4	108	3 1/4	83	6	3
1 1/2"	1 5/8	41	5	127	3 3/4	95	9	4
2"	2	51	6	152	4	102	13	6
3"	3	76	7 1/2	191	4 11/16	119	23	10
4"	4	102	9	229	4 15/16	125	34	15
5"	5	127	10	254	7 1/2	191	39	18
6"	6	152	11	279	8 5/8	219	48	22
8"	8	203	13 1/2	343	11	279	75	34

Series NW-FT Female Threaded Connection



Size	A		B		C		APPROX. WEIGHT	
	Inches	MM	Inches	MM	Inches	MM	LBS	KGS
1"	1 5/16	33	4 1/4	108	1 3/4	44	5	2
1 1/2"	1 7/8	48	5	127	2 3/16	56	7	3
2"	6	60	2 1/2	152	2 3/8	64	12	5
3"	3 1/2	89	7 1/2	191	3 1/8	79	18	8
4"	4 1/2	114	9	229	3 1/4	83	30	14
5"	5 9/16	141	10	254	4 1/4	108	38	17
6"	6 5/8	168	11	279	4 1/16	103	45	20
8"	8	203	13 1/2	343	4 3/4	121	70	32

Series NW-RF Flanged Connection



Size	A		B		C		APPROX. WEIGHT	
	Inches	MM	Inches	MM	Inches	MM	LBS	KGS
1"	1 5/16	33	4 1/4	108	1 11/16	43	4	2
1 1/2"	1 7/8	48	5	127	2 1/16	52	7	3
2"	2 3/8	60	6	152	2 5/16	59	11	5
3"	3 1/2	89	7 1/2	191	2 3/4	70	19	9
4"	4 1/2	114	9	229	2 3/4	70	26	12
5"	5 9/16	141	10	254	2 7/8	73	32	15
6"	6 5/8	168	11	279	2 7/8	73	35	16
8"	8	203	13 1/2	343	3 9/16	90	60	27

*Dimension C contains the thickness of a standard heavy hexagon nut.

SIGHTGLASSES